



House - End Terrace (EPC Rating: D)

11 HAZEL GROVE, ROMFORD, RM6 5PX

£2,500

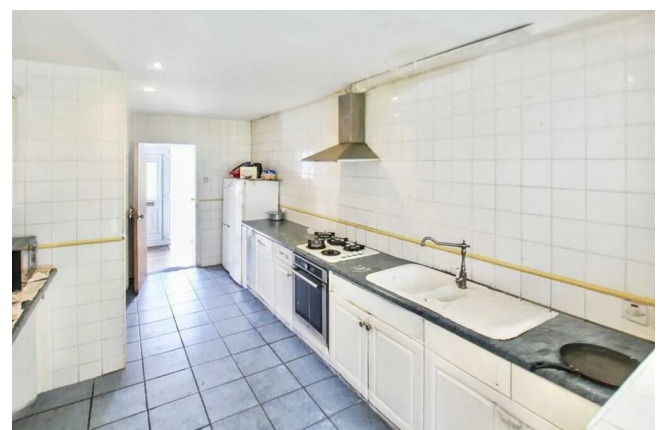
3 Bedroom House - End Terrace located in Romford

Nestled in the charming area of Romford, this delightful end-terrace house offers a perfect blend of comfort and space.

Upon entering, you are greeted by an inviting reception that provide ample space for relaxation and entertaining. The layout is both practical and welcoming, allowing for a seamless flow between the rooms. The highlight of this home is undoubtedly the large conservatory, which floods the space with natural light and offers a wonderful area to enjoy the garden views throughout the seasons.

The property features three well-proportioned bedrooms, providing plenty of room for family members or guests. It also includes a large garden to the rear of the property.

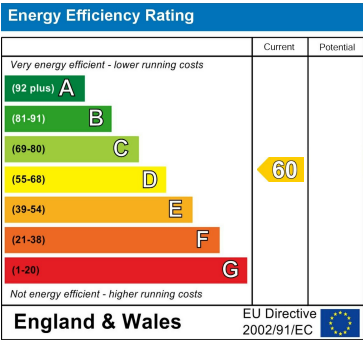
In summary, this three-bedroom end-terrace house in Romford is a wonderful opportunity for those seeking a spacious and comfortable home in a friendly neighbourhood. With its charming features and convenient location, it is sure to appeal to a variety of buyers.



Council Tax Band

C

Energy Performance Graph



Call us on
0208 175 3999

info@moovinhome.co.uk
moovinhome.co.uk

Agents Note: Whilst every care has been taken to prepare these particulars, they are for guidance purposes only. All measurements are approximate and are for general guidance purposes only and whilst every care has been taken to ensure their accuracy, they should not be relied upon and potential buyers are advised to recheck the measurements.